

“The impulse to use drugs may be a universal one, but they are also an acquired taste. A substance accepted as a religious sacrament in one culture can be seen as a public health problem in another.

Our own culture’s socially acceptable drugs, from coffee and tea to alcohol and sleeping pills, are so familiar that we hardly think of them as drugs at all.

Yet in other cultures, the coca leaf, the opium pipe and the bowl of kava are equally familiar, and have only recently become subject to international laws.”

High Society, Mike Jay, 2010





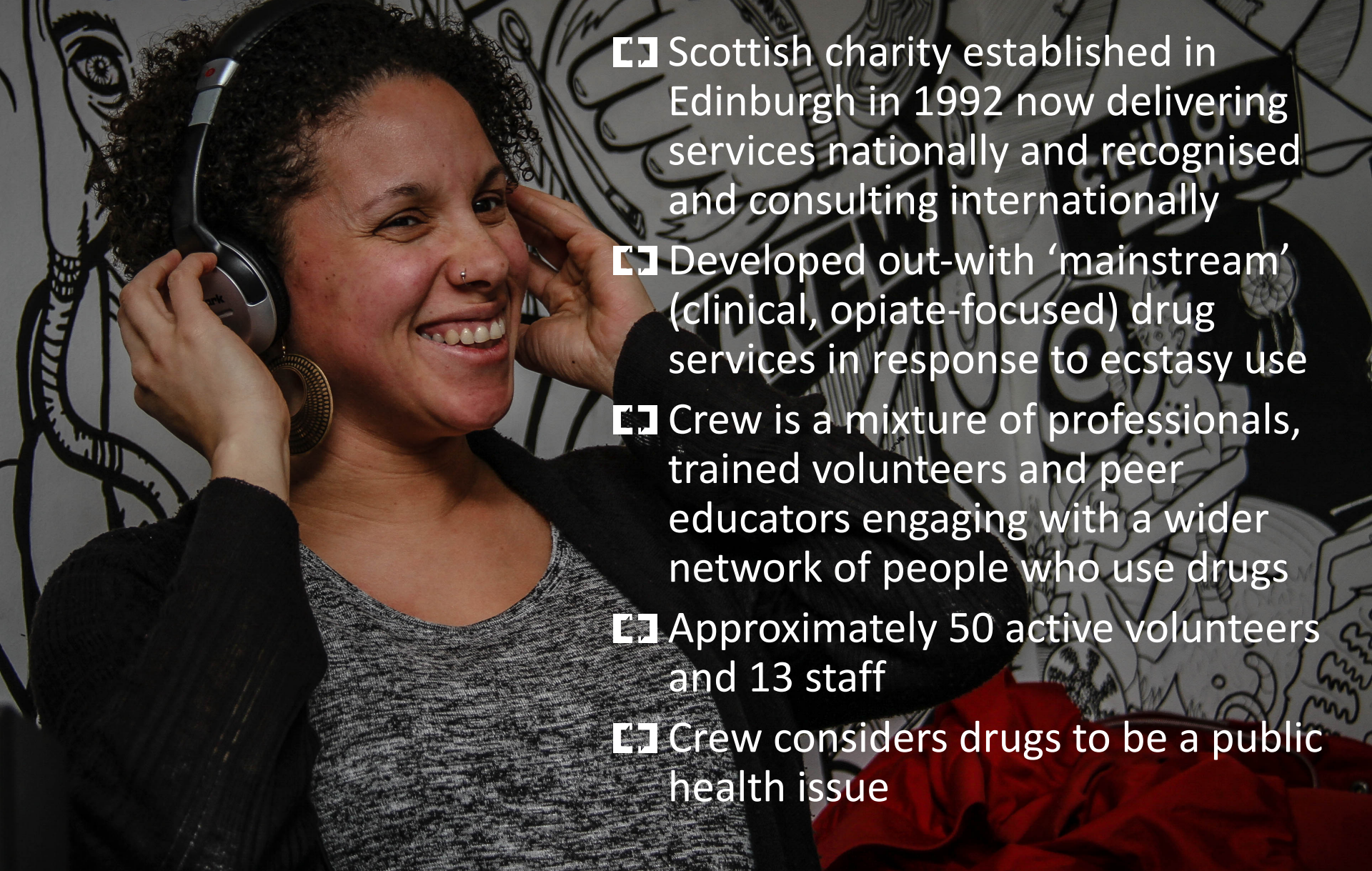
Gold Winner

Who are CREW?

We neither condemn nor condone drug use and believe harm can be reduced for significant numbers of our fellow citizens who decide to use them



Winner



- ❑ Scottish charity established in Edinburgh in 1992 now delivering services nationally and recognised and consulting internationally
- ❑ Developed out-with 'mainstream' (clinical, opiate-focused) drug services in response to ecstasy use
- ❑ Crew is a mixture of professionals, trained volunteers and peer educators engaging with a wider network of people who use drugs
- ❑ Approximately 50 active volunteers and 13 staff
- ❑ Crew considers drugs to be a public health issue

Crew's message is pitched credibly and age appropriately, relative to each audience's exposure to drugs

““Great chat, great service”
shop client

Crew's Stepped Care Approach



- ❑ Clients start & leave stepped care where relevant to them
- ❑ Meets people where they are and crucially doesn't wait for people to become problematic users

Where will you find CREW...?

Crew gains unique insight into drug use by engaging credibly with drug using communities



...where you find people using drugs



- 
- A person with long red dreadlocks is seen from behind, wearing an orange high-visibility vest. The vest has a list of services printed on the back. They are standing in front of a large, diverse crowd of people at an outdoor event, with a large building visible in the background under a blue sky.
- FREE WATER
 - FREE INFORMATION & ADVICE ON DRUGS
 - SPACE TO CHILL OUT
 - SUPPORT WHEN YOUR FEELING ROUGH

“I do not want to consider the possibility of what would have happened if I wasn't spotted, but I feel incredibly fortuitous to still be here” *outreach client*

crew mind altering

In diverse settings...

- ❑ Schools
- ❑ Universities and colleges
- ❑ Supporting frontline drugs services
- ❑ Community hubs
- ❑ Pubs
- ❑ Nightclubs
- ❑ Online
- ❑ Our unique Edinburgh drop-in

1

Inform & Educate

Training other services and sharing unique knowledge



- ☐ Annually 2,000 professionals trained
- ☐ NHS, Police Scotland, Criminal Justice, Education, Housing, front line drugs workers & volunteers

“Loving the fact I’m learning more and more each day, wish I had more days”
peer educator course participant

Hosting national events, speaking at conferences and influencing policy



“Crew’s record speaks for themselves and that means when they speak out on a particular issue, the Scottish Parliament has to listen”

Kezia Dugdale, MSP

Participating in Drug Monitoring Groups, conducting research and publishing information

1

Inform &
Educate

NEPTUNE

NOVEL PSYCHOACTIVE TREATMENT: UK NETWORK



ENJOYING SAFER NIGHTLIFE



Providing expertise to Scottish courts

1

Inform & Educate

Crew expert witnesses produce reports and or attend approximately 50 cases annually, reducing harm from inappropriate sentencing and expediting proceedings

“[the client] plead to the lesser charge of possession which was accepted as a direct result of your report.” Client's defence council



At major festivals & superclubs

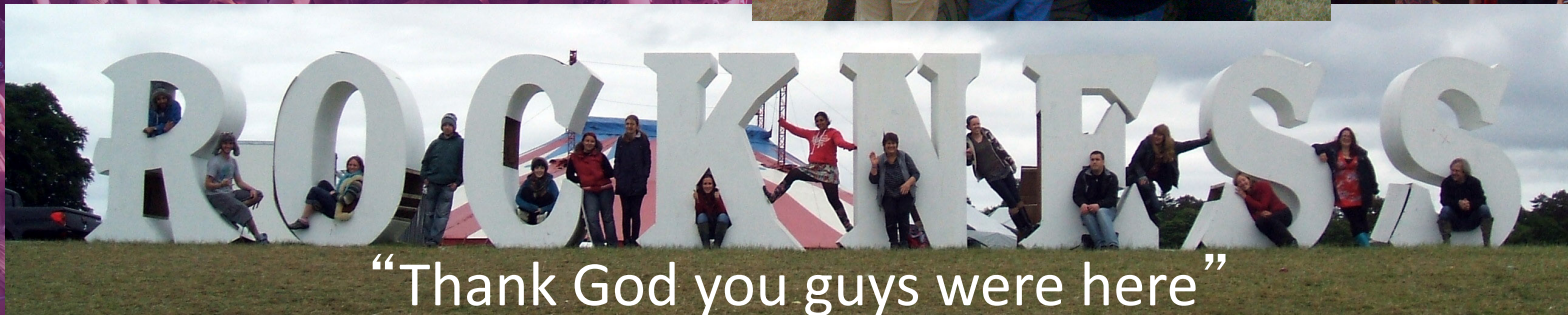
- ❑ Trained volunteer teams of up to 25 engage with thousands
- ❑ Welfare and crisis support for hundreds annually

1

Inform & Educate

2

Advice & Care



“Thank God you guys were here”

St Andrew's first aider

Online:
40,000+ site visits annually

Home

[Welcome to MY CREW]

A place where you can find important drug information, advice and support.

2

Advice
& Care

3

Therapy
& Support

CHECK IT OUT!

about drugs and you →

[DRUGS INFORMATION]

Want to know more about drugs?

Check out our drugs A-Z to find out more about drugs and helpful harm reduction tips.

Find out more →

[WORRIED?]

Worried about your own or someone else's drug use?

Links to sources of support and advice on what to do in an emergency.

Find out more →

Person to person: Crew Support Services

- ☒ Assessment
- ☒ Waiting times support
- ☒ Complementary therapies
- ☒ Telephone support
- ☒ Drug counselling
- ☒ One to one support
- ☒ Groupwork



Our counselling clients

3

Therapy
& Support

“I felt that by being totally honest about drug use that ‘the use’ wasn’t the issue and have had an amazing connection with my counsellor. I have been helped to understand so much about myself and have made great improvements to my life.”



Winner

Crew provides Recovery Development

- ❑ Practical support after or while waiting for counselling
- ❑ links to groups and safe spaces like recovery cafes and fellowship groups, managing life after drugs
- ❑ accepting people can relapse into problematic behaviour and ensuring we are there to help

4

Recovery Support





Crew's definition of *recovery*

*Improving quality of life by
reducing, stabilising or stopping
problematic drug use*



All very well...but does it work?

- ❏ Service users- record numbers using services, surveys show high satisfaction levels, changed attitudes and behaviours.
- ❏ University of Edinburgh psychology department evaluating effectiveness of psychostimulant support services
- ❏ 2 National 'Impact Awards' from the prestigious Kings Fund for impact to health and innovation
- ❏ We are valued partners of a variety of public and voluntary sector agencies who rate our services highly

Outreach summer 2016-17

Over 5,000 accessed service, 2,000 while roaming
157 crisis interventions

Workshops for 290 school children

65-85% report increased confidence
and knowledge to make more
responsible choices about drugs,
alcohol and sexual health



Drop In 2014-17

13,789 people received quality information
1,192 people were given direct support for
drugs, sexual health, mental health and
other enquiries or concerns.



Drug counselling

Approx 150 people per annum attend up to 20 sessions of counselling

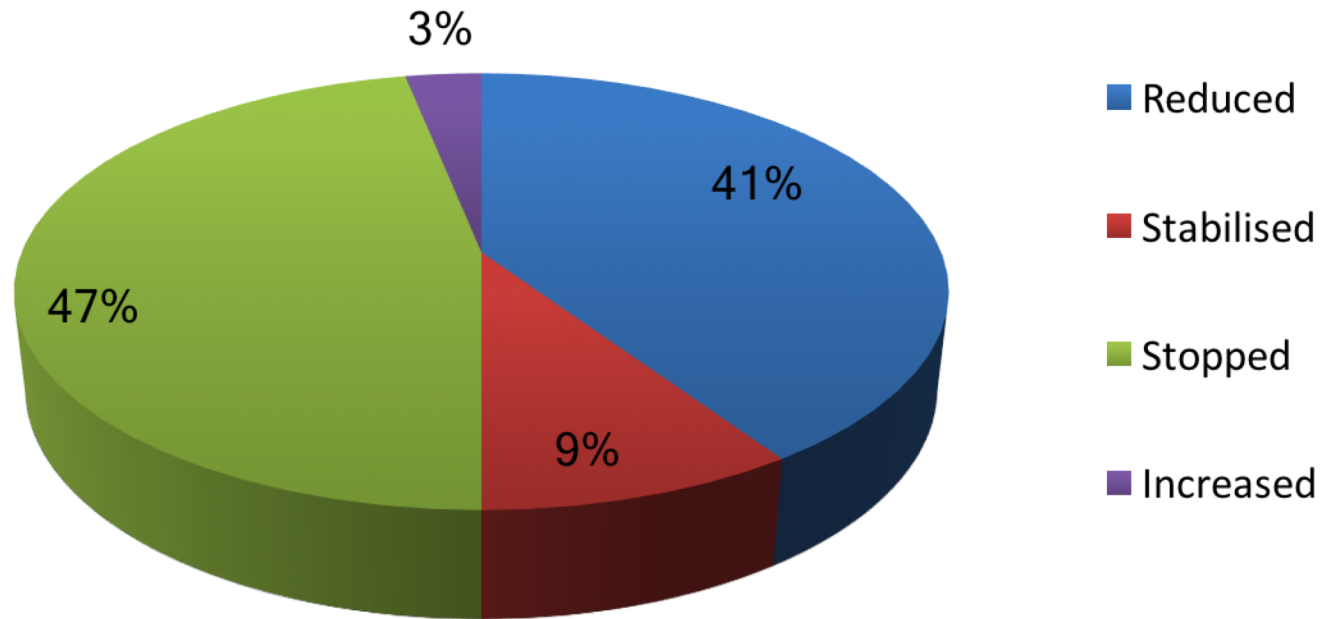
This includes couples and significant others supporting someone who is problematic



Supporting Evidence

Out of clients attending more than 3 counselling sessions

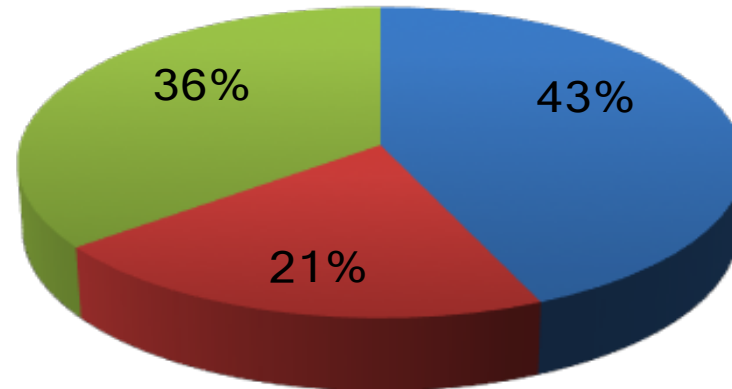
Client Outcomes – drug use has...



What our service users say...

Outreach and shop service users

**Have your attitudes towards
drugs/alcohol changed as a result of using
Crew's services?**



- I feel I already use safely
- Yes definitely I have stopped or reduced my use
- To some extent, I take less risks than before

“I strongly feel that Crew has helped
save my life, and has been integral to my
recovery. I am forever grateful.”
counselling client

Your support will

- Provide a new services website to better manage the 40,000 annual site visits and refer service and crisis enquiries more effectively
- Update and publish crucial guidance for people who work with young people and substance users
- Recruit and train 30 new volunteers and update our Investment in Volunteers award

Your support will

- Fund Crew outreach teams to deliver welfare and information services to major festivals and super clubs
- Provide telephone capacity to manage crisis support calls 2017-18
- Allow the Crew schools programme to return to four local authority areas in 2017-18

Your support will

- Support continued independent debate and influence for reduced harm and stigma from substance use...
- preventing problematic use and deaths from poor information and barriers to access to support services nationally

Thank you





Crew: Mind Altering



@Crew_2000